

**HELI**  
LIFTING THE FUTURE

**25 YEARS**

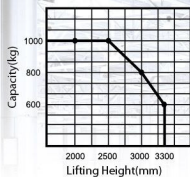
TOP1 FORKLIFT MANUFACTURER AND SALER  
IN CHINA FOR CONSECUTIVE 25 YEARS

# CDD10-050

## 1.0 Ton Electric Straddle Stacker

Lifting Height 2000-3300mm

### Load Curve



**NEW**



### Advantages

#### Configuration and Performance

- Separately excited motor, Strong climbing ability.
- High strength forks.
- Built-in charger.
- Automatic lifting limit, Motor and battery life extension.

#### Safety

- Stepless speed control system, safe and quiet.
- Controller with Multiple automatic protection
- Emergency reversing device/Emergency brake switch.

**24 YEARS**

TOP1 FORKLIFT MANUFACTURER AND SALER  
IN CHINA FOR CONSECUTIVE 24 YEARS

**Built-in charger**

**Free-maintained battery**

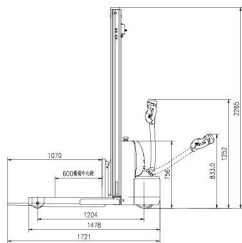
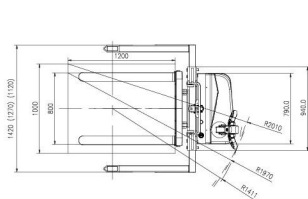
**Adjustable forks at three choices**

Type	Lift height (mm)	Mast type	Outside width between legs (mm)	Inside width between legs (mm)
CDD10-050	2000/2500/3000/3300	Standard 2-STAGE	1120/1270/1420	970/1120/1270

# HELI CDD10-050

Feature			
Model			CDD10
Configuration No.			050
Type			Straddle
Mast type			Standard 2-Stage
Load capacity	kg		1000
Load center	mm		600
Wheel base	mm		1204
Operating type			Walkie
Wheels			
Wheels type			PJ
Wheel quantity	Driving wheel/Balance wheel/Bearing wheel		1/1/2
Dimension			
Standard lift height	mm		2000/2500/3000/3300
Max.extend height	mm		2387/2887/3387/3687
Mast lowered height	mm		1615/1865/2115/2265
Lowered fork height	mm		55
Fork size(length/width/thickness)	mm		1070/100/40
Overall length	mm		1721
Overall width	mm		940
Outside width between forks	mm		200-812
Inside width between forks	mm		0-612
Min.Turning radius	mm		1411
Min.Aisle width for pallets 800×1200	mm		1970
Min.Aisle width for pallets 1000×1200	mm		2010
Min.ground clearance	mm		50
Performance			
Travel speed,laden/unladen	km/h		3/3.5
Lift speed,laden/unladen	mm/s		120/180
Lowering speed,laden/unladen	mm/s		120/120
Gradeability,laden/unladen	%		5/7
Electrical configuration			
Drive motor/Lift motor/Steering motor	kW		DC0.63/DC2.0
Battery voltage	V		24
Battery capacity	Ah		85
Brake			Electromagnetic/Regenerative
Controller			HEL!(Options CURTIS)
Weight			
Battery weight	kg		52
Service weight with battery	kg		710

\* Details of specifications and equipment are based on information available at time of printing and may change without notice.



AUTHORIZED DEALER