

1.6-2.0t G2 series

AC Electric Reach Truck

Sit Down Type (High Efficiency)

FEATURES OF THE COMPLETED TRUCK

Three phase AC type motor technology

- > Three phase AC type motor control on travelling, lifting and steering
- > Good acceleration
- > Fast and sensitive respond on travel direction shifting Free from maintenance motor without carbon brush having long service life and low maintenance cost
- > Energy regenerating during deceleration extending operation hours
- > Max. travelling speed without load 20% increased
- > Max. travelling speed with load 27% increased

Newly designed hydraulic system

- > Newly designed hydraulic system with high working efficiency
- > High power lifting motor
- > MOSFET lifting speed governing electric controller
- > New type low noisy gear pump
- > Max. lifting speed without load 15% increased
- > Max. lifting speed with load 25% increased

G2 series / INTELLIGENT ENVIRONMENT-FRIENDLY

Optimized intelligent design

- > ZAPI travelling motor controller
- > ZAPI lifting motor controller
- > ZAPI steering motor controller
- > CAN bus technology
- > Emergency power off of both main circuit and control circuit
- > Parking brake on slope
- > Operation sequence protection
- > Travelling speed control
- > Electric controller self protection
- > Lifting height pre-selector (optional)

Advanced EPS electric powered steering

- > EPS electric powered steering offering easy, flexible, high efficient and mute operation
- > Steering motor controller
- > Automatic centering function
- > Real-time shifting between 180°steering mode and 360° steering mode
- > Automatic limit on speed and accelerated speed when steering

Easy operated thumb switch

- > To control hydraulic functions
- > Clear operating units
- > Proportional solenoid offering a stable and comfort lowering action



Displayer

- > High quality meter displaying important operating data
- > Display of traveling direction and drive wheel angle
- > Display of 180°/360° steering mode
- > Display of battery quantity and fault code
- > Travelling mode selection
- > Lifting lock indication
- > Hour meter
- > Labor hour display
- > Time
- > Fork height display (optional)

Wide view mast

- > Good view when loaded
- > Integral sideshifter
- > Mast vertical, fork tilt
- > High residual load capacity at high lift height
- > Lift height range:4600-12500mm
- > Buffering during lifting and lowering
- > Buffering on lifting and lowering limit
- > Buffering when cylinder moving forward

Comfort cab

- > Comfort cab offering driver good working environment and easy operation
- > Easy reach to important operation
- > Adjustable seat (seat position/backrest angle)

Overhead guard

- > Fence on top of the overhead guard offering driver wide view
- > Beveled view angle design with front ring beam meeting humanized requirements

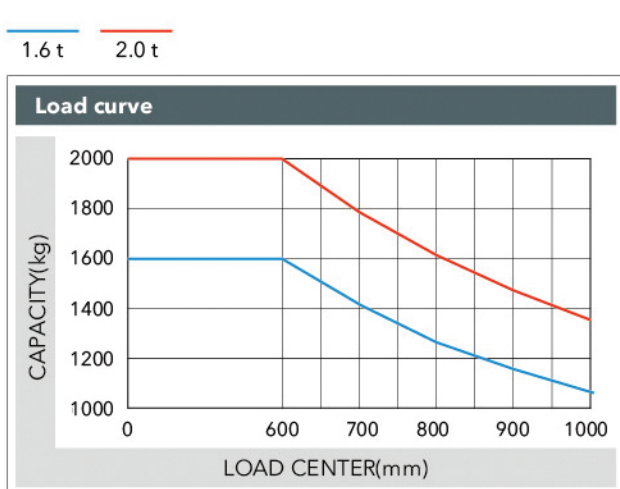
HELI LIFTING THE FUTURE

www.helichina.net

G2 series / INTELLIGENT ENVIRONMENT-FRIENDLY

WIDE VIEW FULL FREE 3-STAGE MAST											
Mast model	Lifting height (mm)h3		Free lifting height (mm)h2		Mast height, lowered (mm)h1		Load capacity (kg)		Total weight (kg)		Fork tilt angle (front/rear) α/β
	CDD16	CDD20	CDD16	CDD20	CDD16	CDD20	CDD16	CDD20	CDD16	CDD20	
ZSM460	4600	4600	1280	1280	2314	2314	1600	2000	3395	3560	2°/4°
ZSM480	4800	4800	1340	1340	2381	2381	1600	2000	3410	3580	2°/4°
ZSM540	5400	5400	1540	1540	2581	2581	1600	2000	3454	3640	2°/4°
ZSM570	5700	5700	1640	1640	2681	2681	1550	1900	3476	3670	2°/4°
ZSM630	6300	6300	1840	1840	2881	2881	1500	1900	3521	3730	2°/4°
ZSM675	6750	6750	1940	1940	2982	2982	1450	1800	3576	3775	2°/4°
ZSM700	7000	7000	2030	2030	3065	3065	1400	1700	3595	3800	2°/4°
ZSM715	7150	7150	2080	2080	3115	3115	1400	1700	3606	3820	2°/4°
ZSM750	7500	7500	2190	2190	3232	3232	1300	1700	3633	3850	2°/4°
ZSM800	8000	8000	2360	2360	3398	3398	1200	1500	3669	3900	2°/4°
ZSM850	8500	8500	2530	2530	3564	3564	1100	1300	3706	3950	2°/4°
ZSM900	9000	9000	2690	2690	3730	3730	900	1100	3742	4000	2°/4°
ZSM950	9500	9500	2860	2860	3898	3898	800	1000	3780	4050	2°/4°
ZSM1000	-	10000	-	3030	-	4064	-	850	-	4100	2°/4°
ZSM1050	-	10500	-	3190	-	4230	-	800	-	4150	2°/4°
ZSM1080	-	10800	-	3290	-	4330	-	750	-	4180	2°/4°
ZSM1100	-	11000	-	3360	-	4398	-	700	-	4200	2°/4°
ZSM1150	-	11500	-	3530	-	4564	-	650	-	4250	2°/4°
ZSM1200	-	12000	-	3690	-	4730	-	550	-	4300	2°/4°
ZSM1250	-	12500	-	3860	-	4898	-	500	-	4350	2°/4°

WIDE VIEW MAST											
Mast model	Lifting height (mm)h3		Free lifting height (mm)h2		Mast height, lowered (mm)h1		Load capacity (kg)		Total weight (kg)		Fork tilt angle (front/rear) α/β
	CDD16	CDD20	CDD16	CDD20	CDD16	CDD20	CDD16	CDD20	CDD16	CDD20	
M290	2900	2900	80	80	2200	2200	1600	2000	3140	3660	2°/4°
M320	3200	3200	80	80	2350	2350	1600	2000	3150	3370	2°/4°
M360	3600	3600	80	80	2550	2550	1600	2000	3180	3400	2°/4°
M380	3800	3800	80	80	2650	2650	1600	2000	3200	3420	2°/4°
M400	4000	4000	80	80	2750	2750	1600	2000	3210	3430	2°/4°
M420	4200	4200	80	80	2850	2850	1600	2000	3230	3450	2°/4°
M440	4400	4400	80	80	2950	2950	1600	2000	3240	3460	2°/4°
M460	4600	4600	80	80	3050	3050	1600	2000	3300	3510	2°/4°
M500	5000	5000	80	80	3250	3250	1500	1900	3320	3540	2°/4°



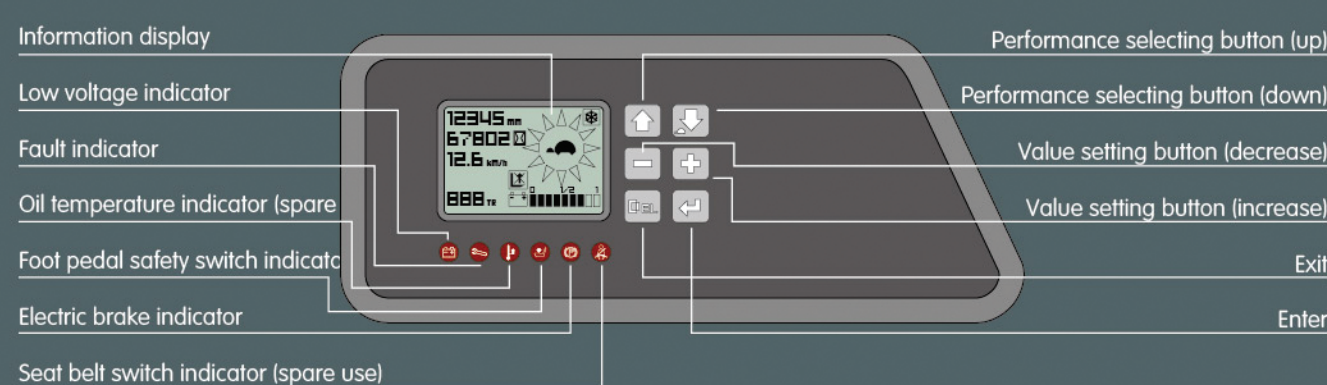
↑15%
THE PERFORMANCE OF BATTERY INCREASES

Renewable energy technologies

With the use of AC controlling renewable energy technologies, the battery is more energy-saving and the working hour of the battery is extended by 15%.

HELI

The reliable special instrument gives a complete display of the vital information, like operation status, fault detection, etc. It ensures the operator predominate the vehicle status more intuitive and convenient.



STANDARD CONFIGURATION

- AC travelling motor
- AC lifting motor
- AC steering motor
- ZAPI travelling motor controller
- ZAPI lifting motor controller
- ZAPI steering motor controller
- Electromagnetic brake
- DC/DC converter
- Low noisy gear pump
- Control valve (four throw)
- 4600mm three stage full free lift mast
- Integral sideshifter
- Standard fork
- Backrest
- Polyurethane tyre
- LED motor
- Front working light
- Warning light

OPTIONAL DEVICE

- Three-stage full free lift mast (other lifting height)
- fork with other length
- Fork extension
- Lifting height pre-selector
- Monitoring system
- Other battery
- Germany hopacker battery
- Italy FAAM battery
- Battery charger
- Customer made color

* Details of specifications and equipment are based on information available at time of printing and may change without notice.



ANHUI HELI CO., LTD.
ADD: NO.668 Fanyang Street, Economic Development Zone, Hefei, P.R. China
TEL: (86-551) 63639068 (America) 63639258 (Europe) 63639258 (Asia)
63662105 (Africa & Middle East) 63639530 (Warehouse Equipment)
63639531 (Wheel loader)
FAX: (86-551) 63639966
WEBSITE: http://www.helichina.net
Email: heli@helichina.net

AUTHORIZED DEALER

© 2016 heli copyright

Catalog No.2016.10 HELI Print



HELI LIFTING THE FUTURE

SINCE 1958

1.6-2.0t G2 series

AC Electric Reach Truck

Sit Down Type (High Efficiency)

G2 series / INTELLIGENT ENVIRONMENT-FRIENDLY